

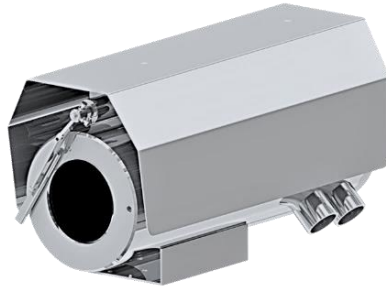
SS1CH-22x4K Series

Stainless Steel Weatherproof Fixed Camera Housing

Integrated with 8MP [4K] 22x Optical Zoom Ventionex VX2 Sony Sensor Camera Module



SS1CH



SS1CH-W



SS1CH-LEDW

Main Features



Marine grade
AISI316L Stainless
Steel material



Operating
Temperature -40°C to
60°C



IP 66 / 68



Vandal-proof IK10
ratings



Motorized 6.4 -
138.5 mm



8MP [4K] Resolution
22x optical zoom lens



Option for IEEE
802.3at PoE+



Options for LED
illuminator available

Technical Data

General	
Ingress Protection	IP 66 / 68
Operating Temperature	-40°C to 60°C
Relative Humidity	≤95%
Mechanical	
Body Material	AISI316L Stainless Steel
Sight Glass Material	Window with hardened mineral clear tempered glass
	Window with Germanium glass (for SS1CH-G and SS1CH-GL models)
Overall Dimension (WxHxD)	<i>Please refer to overall dimension drawings of each model.</i>
Internal Usable Size for Camera Module	Ø105 x 250 mm
Cable Entry	2 x M25
Weight	Approximate 20KG
Electrical	
Operating Voltage	AC110-240V (0.5A - 1.10A), 50/60Hz Optional: IEEE 802.3at PoE+
Power Consumption	Max 110W (110V), Max 120W (240V)
Thermostatically Controlled Heater	T°C on: <10°C, T°C off: >10°C
Optional	
Wiper Mechanism	Available for SS1CH-W and SS1CH-LEDW model
LED Illumination	Up to 200 meters (Available for SS1CH-LED and SS1CH-LEDW model)
Accessories	
Standard	Sunshield, Swivel Joints
Optional	Wall Bracket

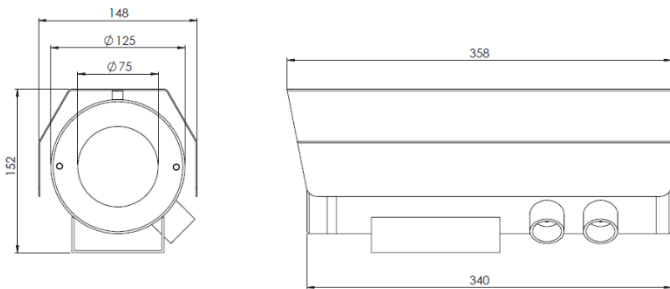
IP Camera/Lens

Camera		
Day/Night	Automatically removable IR-cut filter	
Shutter Time	1~1/10K s	
Noise Reduction	2DNR, 3DNR, NR by motion	
Image Settings	Color, Brightness, Sharpness, Contrast, White Balance, Exposure Control, Masking, Text Overlay	
Corridor Mode	Corridor Mode 90°, 180°, 270° rotation	
Image		
Image Sensor	1/1.8" Progressive CMOS	
Effective Pixels	HxV = 3864x2180, 8MP [4K]	
Pixel Size	2.0 μm	
Lens	f =6.4 mm (wide) to 138.5 mm (tele), F1.5	
FOV	Horizontal: 64° (wide), 3° (tele)	Vertical: 37° (wide), 2° (tele)
Zoom	22x Optical zoom, digital zoom ready	
Min. Illumination	Color: 0.04Lux	B/W: 0.002Lux
Frame Rate (Maximum)	H265: HDR 4K @30fps + d1@30fps HDR 6M @30fps + 720p @30fps	
	H264: HDR 4K @30fps + d1@30fps HDR 6M @30fps + 720p @30fps	
	MJPEG: 1080p @30fps	
Compression Standard		
Video Compression	H.265/H.264/MJPEG	
Video Streaming	Up to 4 individually configurable streams in H.265/ H.264/ MJPEG Configurable resolution/ frame rate/ bandwidth LBR/ VBR/ CBR in H.265/ H.264	
Network		
Security	User Authentication/ HTTPS/ IP Filter/ IEEE 802.1x	
Supported Protocols	ARP, PPPoE, IPv4/v6, ICMP, IGMP, QoS, TCP, UDP, DHCP, UPnP, SNMP, SMTP, RTP, RTSP, HTTP, HTTPS, FTP, NTP, DDNS	
ONVIF	Profile S/ G/ Q/ T conformant	
System Integration		
Analytics	Motion Detection/ Tampering	
General		
Storage	Support for microSD/ microSDHC/ microSDXC card Support for recording to NAS	

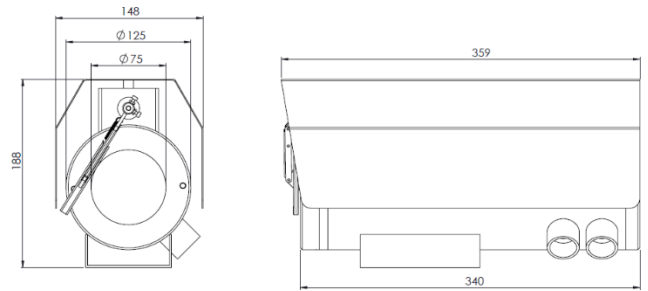
*Analog camera and other camera module options are available upon request.

*Thermal camera options are available for G model. Please contact us for the details

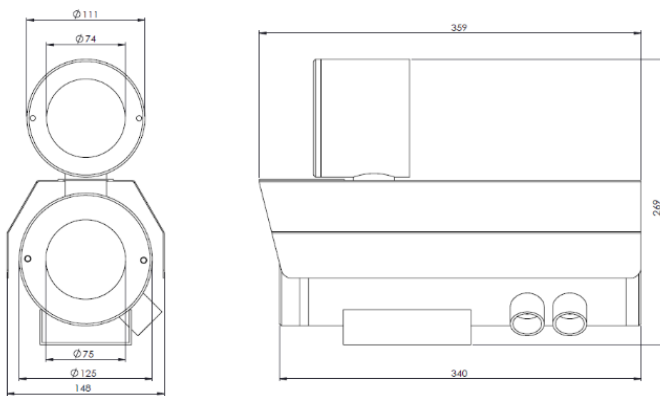
Outline Dimensions (mm)



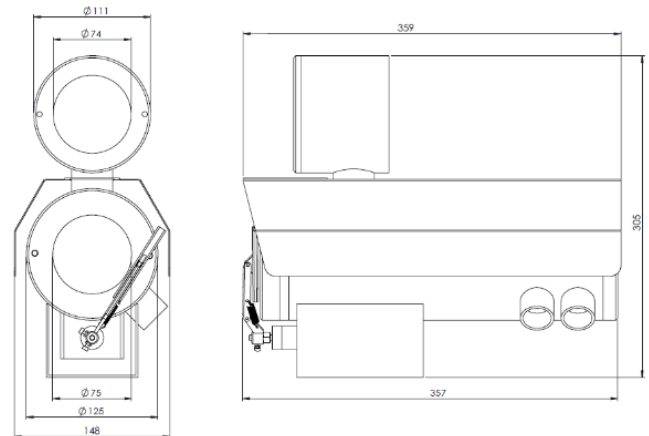
SS1CH Outline Dimensions



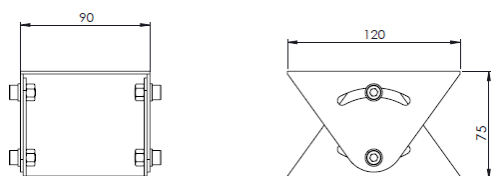
SS1CH-W Outline Dimensions



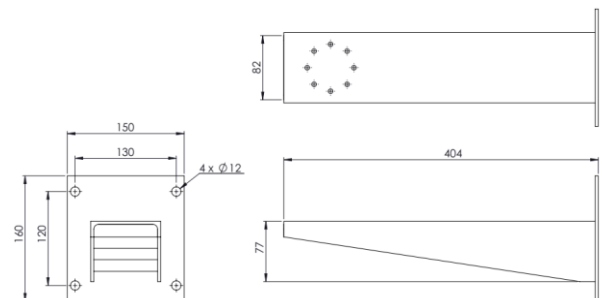
SS1CH-LED Outline Dimensions



SS1CH-LEDW Outline Dimensions



SJ-SS1CH - Swivel Joints Outline Dimensions



WB-SS1CH - Wall Bracket Outline Dimensions

Model & Ordering Code

SS1CH - X - 22x4K - X

POE Options

Blank : No additional option
POE : POE+

Additional Options

Blank : No additional option
W : Fitted with wiper mechanism
LED : With LED Illuminator
LEDW : With LED Illuminator and Wiper

Standard Accessories

- SCH-SS1CH : Sunshield for Camera Housing (for SS1 series without LED illuminator)
- SCH-SS1CH-LED : Sunshield for Camera Housing with LED illuminator (for SS1CH-LED and SS1CH-LEDW)
- SJ-SS1CH : Swivel Joints

Optional Accessories

- WB-SS1CH : Wall Bracket