

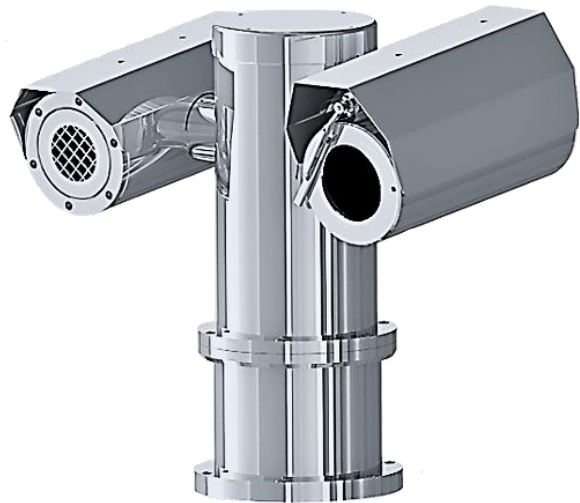
## SS1PTZD Series with BOSCH Camera

### Stainless Steel Weatherproof Dual PTZ Camera Station

Integrated with 2MP Bosch DINION 6000 Camera Module and 17x Optical Zoom Autofocus Lens  
+ Thermal Camera (384x288 or 640x480) Module



SS1PTZD-LEDW-G



SS1PTZD-W-G

### Main Features



Marine grade  
AISI316L Stainless  
Steel material



IP 66 / 68



Vandal-proof IK10  
ratings



Fitted with wiper  
mechanism



Bosch 2MP Box  
Camera with 17x  
optical zoom  
autofocus lens



384x288 or 640x480  
resolution for thermal  
camera module



Option for IEEE  
802.3bt PoE++  
(90Watt)



Option for LED  
illuminator available

## Technical Data

General		
Protection Level	IP 66 / 68, TVS 6000V Lightning Protection, Surge Protection and Voltage Transient Protection	
Operating Temperature	-40°C to 60°C	
Relative Humidity	≤95%	
Mechanical		
Body Material	Stainless steel 316L material	
Sight Glass Material	Window with hardened mineral clear tempered glass	
	Window with Germanium glass (for SS1PTZD-G models)	
Pan & Tilt Speed	Variable speed option: 0.1°/s to 45°/s	
Pan & Tilt Movement	Pan: 360° continuously	Tilt: -90° ~ +90°
Overall Dimension (WxHxD)	Please refer to overall dimension drawings of each model.	
Cable Entries	1 x M25 (optional additional cable entry upon request)	
Weight	Approximate 42KG	
Electrical		
Operating Voltage	AC110-240V (0.5A - 1.10A), 50/60Hz Optional: IEEE 802.3bt PoE++(90W)	
Power Consumption	Max 110W (110V), Max 120W (240V)	
Thermostatically Controlled Heater	T°C on: <10°C, T°C off: >10°C	
Optional		
LED Illumination	Up to 200 meters (for SS1PTZ-LEDW model)	
Accessories		
Standard	Sunshield for Camera Housing	
Optional	Wall Bracket, Sunshield for Pan & Tilt Body, Pole Top Mounting Adapter	

## IP Camera/Lens

Camera		
Day/Night	Auto (adjustable switch points), Color, Monochrome	
Shutter Time	Automatic Electronic Shutter (AES); Fixed shutter (1/25[30] to 1/15000) selectable; Default shutter	
Noise Reduction	Intelligent Dynamic Noise Reduction Intelligent Streaming	
Image Settings	Color, Brightness, Sharpness, Contrast, White Balance, Exposure Control, Masking, Text Overlay	
Corridor Mode	Corridor Mode 90°, 180°, 270° rotation	
Image		
Image Sensor	1/2.8" Progressive CMOS	
Effective Pixels	HxV = 1920x1080 (2MP)	
Pixel Size	4 μm	
Lens	f =7.5 mm (wide) to 127.0 mm (tele), F1.6	
Zoom	17x Optical Zoom with Autofocus	
Min. Illumination	Color: 0.0069Lux	B/W: 0.0008Lux
Compression Standard		
Video Compression	H.264/MJPEG	
Video Streaming	Multiple configurable streams in H.264 and MJPEG, configurable frame rate and bandwidth. Regions of Interest (ROI)	
Network		
Security	User Authentication/ HTTPS/ IP Filter/ IEEE 802.1x	
Supported Protocols	IPv4, IPv6, UDP, TCP, HTTP, HTTPS, RTP/RTCP, IGMP V2/V3, ICMP, ICMPv6, RTSP, FTP, ARP, DHCP, APIPA (Auto-IP, link local address), NTP (SNTP), SNMP (V1, V3, MIB-II), 802.1x, DNS, DNSv6, DDNS (DynDNS.org, selfHOST.de, noip.com), SMTP, iSCSI, UPnP (SSDP), DiffServ (QoS), LLDP, SOAP, Dropbox™, CHAP, digest authentication	
ONVIF	Profile S/ G/ M/ T conformant	
System Integration		
Analytics	Rule-based alarms and tracking, Line crossing, Enter /leave the field, Follow route Loitering, Idle/removed object, People counting, Crowd density estimation, 3D tracking, Audio detection (if microphone used)	
General		
Storage	Supports up to 32 GB microSDHC / 2 TB microSDXC card. Extreme lifetime and health monitoring support that provides early service indication. Recommended: Industrial microSD cards with health monitoring	

\*Analog camera and other camera module options are available upon request.

\*Thermal camera options are available for G model. Please contact us for the details

## Thermal Camera/Lens

	384	640
Type	Uncooled FPA	
Resolution	384x288	640x480
Pixel pitch	17μm	
NETD	≤80mK@F1, 300K, 50Hz	
Field Frequency	50Hz	
Spectral range	8 - 14 μm	
Lens	Options: 9mm, 13mm, 25mm, 37mm, 42mm	Options: 7.5mm, 9mm, 15mm, 18mm, 30mm, 37mm
Brightness/Gain Adjustment	Yes	
Polarity Inversion	Reverse color	
Digital Zoom	Up to 4x Zoom	
Image Enhancement	Yes	
Calibration	Manually calibrate, Automatically calibrate during power on	
Rolling-over/mirror	On/Off	
Display	Varieties of pseudo color labels (firefighting color, iron hot, red hot, amber, white hot, black hot, etc.)	
Focus	Manual/Auto	
Pan & Tilt Control	Yes	
Storage	Support Micro SD, up to 64G, local storage, NAS (NFS, SMB support) / FTP protocol	
OSD	Time, date, channel number, channel name and custom text, temperature measurement information	
Recording Mode	Mobile Surveillance, Alarm Recording (Gray, highest temperature, areas, alarming cross the lines, etc.), network disconnect recording, timing recorded	
Raw Thermal Image Output	25fps, in the back end manually capture the signal frame raw image and data, the raw image can be analyzed and measured temperature	
Ethernet	RJ-45 (10/100BASE-T)	
Video Compression Format	H.264, Motion JPEG	
Resolution	640x480 / 384x288	
Max Frame Rate	H.264: 30fps MJPEG: 640x480: 15fps	
Video Quality Modulation	H.264: Compression degree, target bite rate degree control	
Bit Rate Control Way	H.264: CBR or VBR	
IP	IPv4	
Protocol	TCP/IP, UDP/IP, RTP(UDP), RTP(TCP), RTCP, RTSP, NTP, HTTP, HTTPS, SSL, DHCP, FTP, ICMP, IGMP, ARP, DNS, DDNS	
Safety	HTTPS(SSL) Login Verification, Class Login Verification, IP address filter, user access log, 802.1x ID Verification	
Applied Program Interface	ONVIF Profile S	
Web Browser	Microsoft Internet Explorer (Version 9~11)	
Temperature Detection Range	Normal temperature range: -20°C ~ 180 °C High temperature range: 100°C ~ 600 °C (-H Model, Please specify upon order)	
Accuracy	±2°C or ±2%	
Mode	Supports 3 movable points, 3 movable areas (highest temperature, lowest temperature, average temperature measurement)	
Emissivity Correction	0.01 ~ 1.0 adjustable	
Alarm Output	Switch output	
Protocol Output	SDK alarm protocol output, ONVIF alarm information output	

Resolution	Lens (mm)	FOV	Detection (m)	Recognition (m)
640×480	Fixed			
	9	62.3° x 48.8°	291	146
	25	24.6° x 18.5°	809	404
	37	16.7° x 12.6°	1197	599
	Motorized			
	13	45.4° x 34.8°	421	210
	25	24.6° x 18.5°	809	404
	42	14.8° x 11.1°	1359	679
384×288	Fixed			
	9	39.9° x 30.4°	291	146
	18	20.6° x 15.5°	582	291
	37	10.1° x 7.6°	1197	599
	Motorized			
	7.5	47.0° x 36.2°	243	121
	15	24.6° x 18.5°	485	243
	30	12.4° x 9.3°	971	485

Lens Comparison Table

## Our Technology

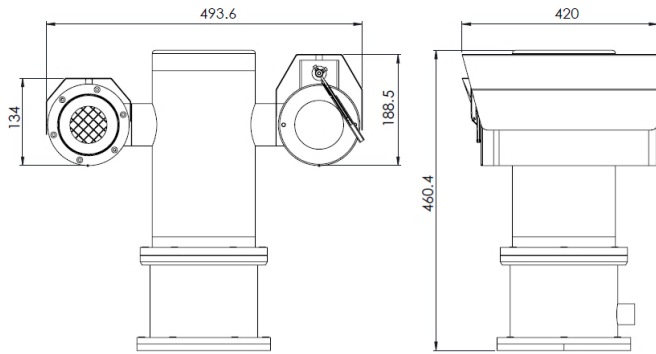
### ✓ RADIOMETRIC FUNCTIONS FOR MEASURING TEMPERATURE

The integrated thermal camera can have up to a maximum of 6 Area Measures, 6 Point Measures and 3 Line Measures. The different type of measures can accommodate different type of thermal monitoring. Area Measures and Line Measures monitor the maximum, minimum and average temperature with precise temperature detection. Point Measures monitor the temperature on its exact location. The device can be configured so that it independently generates a Radiometric Alarm and/or Warning. This function is particularly useful when Monitoring Industrial Processes.

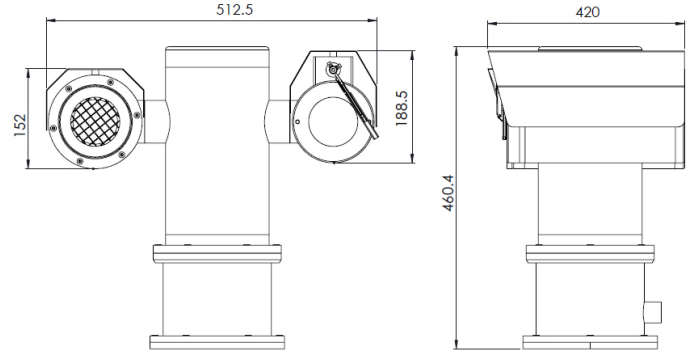


Configurations for Radiometric Temperature Measurement

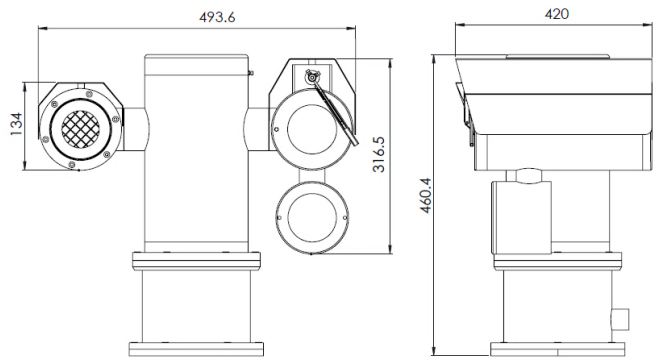
## Outline Dimensions (mm)



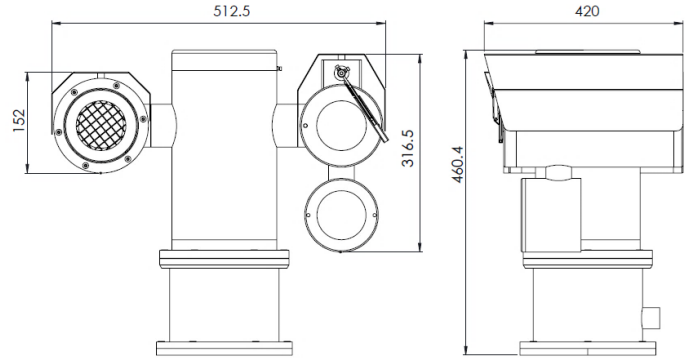
SS1PTZD-W-G Outline Dimensions



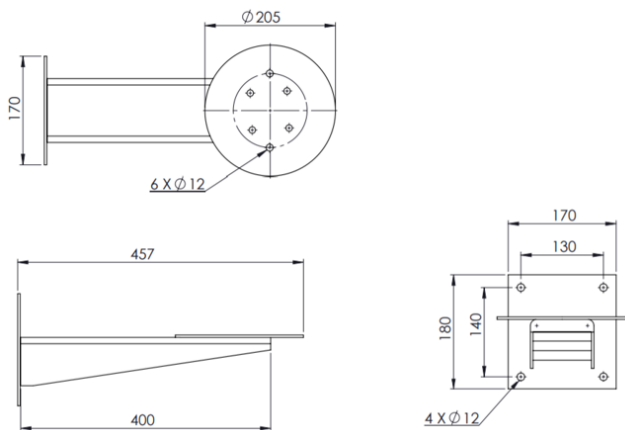
SS1PTZD-W-GL Outline Dimensions



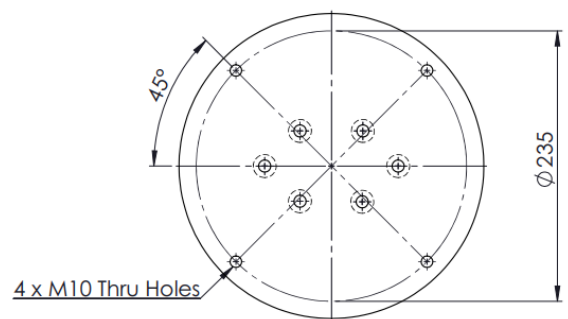
SS1PTZD-LEDW-G Outline Dimensions



SS1PTZD-LEDW-GL Outline Dimensions



WB-SS1PTZ - Wall Bracket Outline Dimensions



PTA-SS1PTZ - Pole Top Mounting Adapter  
Outline Dimensions

Model & Ordering Code

SS1PTZD - X - X - BH - 0217 - X - X - X - X

Camera Station Options  
W : Fitted with wiper  
LEDW : With LED Illuminator  
and Wiper

Camera Station Options  
G : With Germanium Window and Front  
Guard  
GL : Large Diameter (143 mm) with  
Germanium Window and Front Guard

Thermal Camera Module Options  
384 : 384x288 resolution  
640 : 640x480 resolution

POE Options  
Blank : No additional option  
POE : POE++

Detection Mode Options  
Blank : Normal Temperature  
H : High Temperature

Thermal Camera Focal Length Options  
M7.5 : 7.5 mm motorized lens  
M13 : 13 mm motorized lens  
M15 : 15 mm motorized lens  
M25 : 25 mm motorized lens  
M30 : 30 mm motorized lens  
M42 : 42 mm motorized lens  
F9 : 9 mm fixed lens  
F18 : 18 mm fixed lens  
F25 : 25 mm fixed lens  
F37 : 37 mm fixed lens

*\*Please refer fixed lens comparison table  
above.*

Standard Accessories

SCH-SS1PTZD : Sunshield for Camera Housing

Optional Accessories

WB-SS1PTZ : Wall Bracket  
SPT-SS1PTZD : Sunshield for Pan & Tilt Body  
PTA-SS1PTZ : Pole Top Mounting Adapter