

## Case Studies: Radar PTZ Tracking for offshore, marine, port and border control



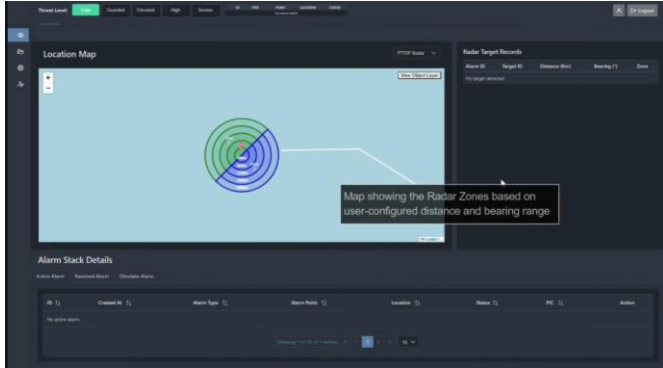
### Radar Integrated Multiple PTZ Tracking

Our system combines radar technology with multiple PTZ cameras, access control, and intrusion detection analytics to create an advanced surveillance solution. When radar detects an object entering an intrusion zone, the PTZ cameras are immediately activated to continuously track and monitor it. At the same time, access control systems and intelligent analytics assess and verify any unauthorized access or suspicious activity. Whether overseeing an offshore platform, marine vessel, or sea or land border, this solution **provides comprehensive coverage and swift response to potential security threats**. It's like having a virtual security team working tirelessly to ensure your environment remains safe and secure.

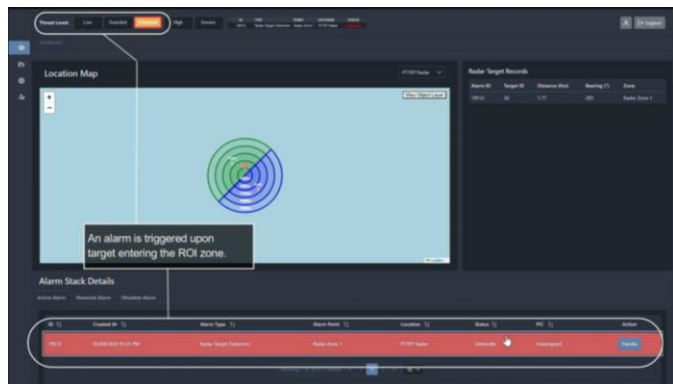
## “How Do We Help Them?”

- **Enhanced Tracking:** Combines radar detection with PTZ long-range cameras' visual verification for accurate tracking of intruder human, vehicles and vessels.
- **Improved Situational Awareness:** Provides clear understanding of vessel position, speed, and track for better decision-making.
- **Redundancy and Reliability:** Multiple PTZ cameras ensure continuous coverage and backup options if one camera fails.
- **Optimized Resource Allocation:** Radar autonomously detects targets, allowing PTZ cameras to focus on detailed inspection, optimizing response.
- **Real-time Monitoring and Recording:** Enables immediate action and provides evidence through real-time monitoring and recording capabilities.

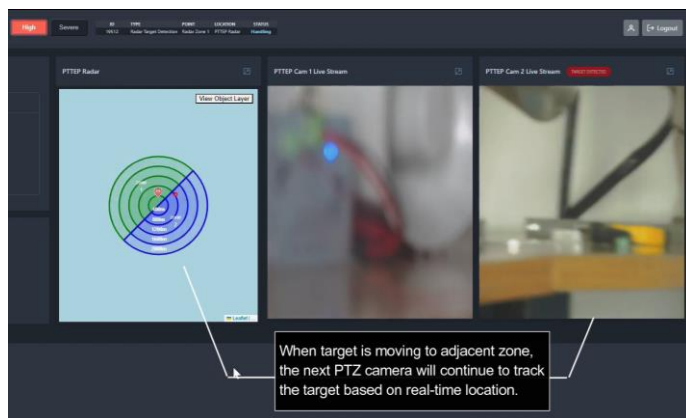
# How It Works?



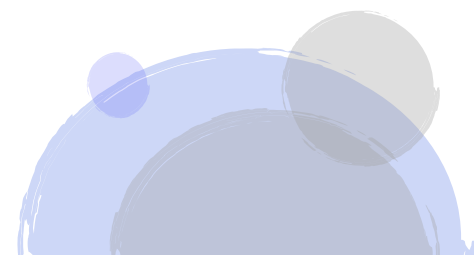
**UI Visualization:** Our unified platform provides an intuitive user interface that displays a radar map with user-configured zones based on distance and bearing range. This helps in monitoring specific areas effectively.

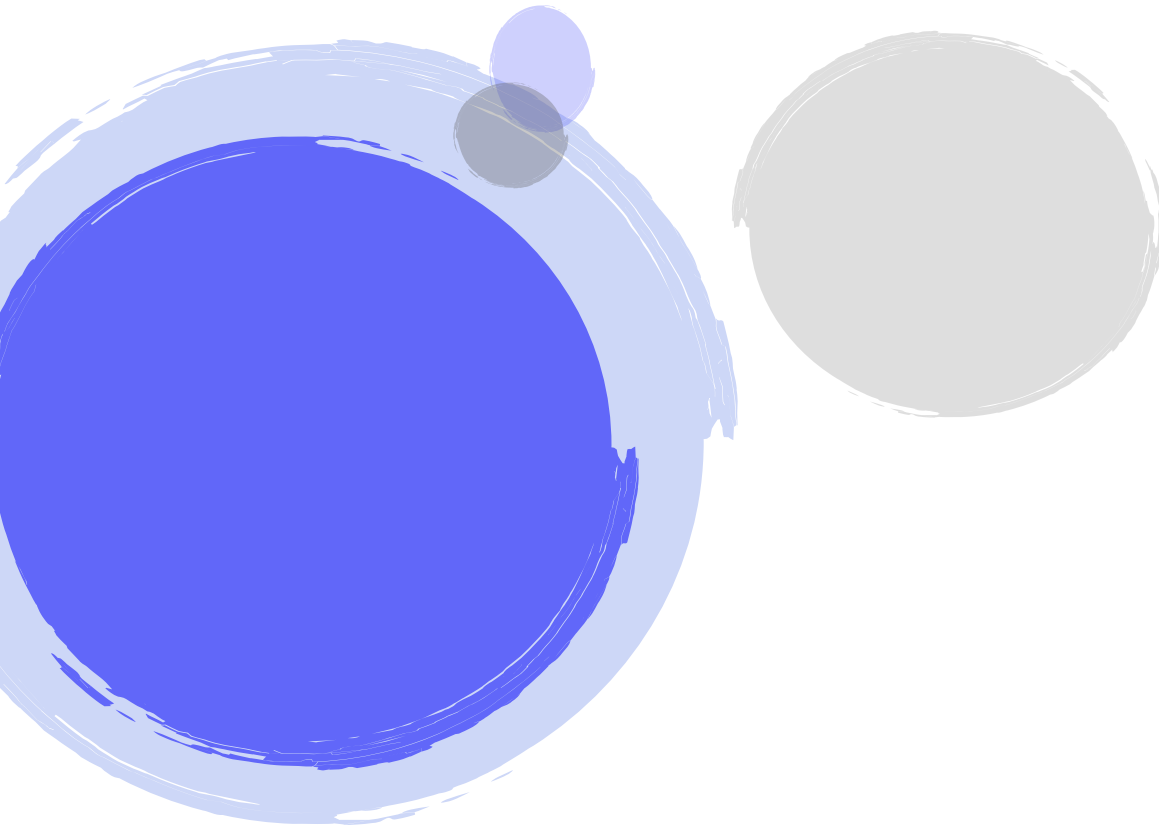


**Alarm Trigger:** An alarm is immediately triggered when a target or intruder enters the predefined Region of Interest (ROI) zone, allowing for prompt response.



**Handover to next PTZ:** When the target moves to an adjacent zone, the next PTZ camera will seamlessly continue tracking the target based on its real-time location.





## Ventionex



### Singapore (HQ)



55 Toh Guan Road East, #06-01 Uni-Tech Centre, Singapore, 608601



+65 6680 9321



### Malaysia



No 2, Jalan Laman Setia 7/6, Setia Business Park 81550 Gelang Patah, Johor, Malaysia



+607 5950 387



### UAE



CPM-01B4-MF-M015, Cubes Park B4, Musaffah M25, Abu Dhabi, United Arab Emirates.



+97 1566112980



### Vietnam



8bis Hoang Hoa Tham Street, Ward 7, Binh Thanh District, Ho Chi Minh City, Vietnam.



+ 84 9838 313 68



[enquiry@ventionex.com](mailto:enquiry@ventionex.com)



<https://www.ventionex.com>



Ventionex



YouTube



LinkedIn